



SIMPROCESS®



What's New in Version 4.5

- SIMPROCESS models can be exported to PowerPoint.
- All model related artifacts (including model, metamodel, and dashboards) can be bundled for exchange with other SIMPROCESS users.
- The ability to set attributes on a spreadsheet generation schedule was added.
- A new database generation schedule allows entities to be generated and attributes to be set from an SQL database.
- Connections to external data sources can be created by defining file, spreadsheet, or database input sources.
- A new library of Business Process Modeling Notation (BPMN) in the SPUser/SampleFiles/BPMN directory.
- A collection of Business Process Execution Language (BPEL) metamodels (used to include BPEL metadata in a model).

APPLICATIONS

Process Mapping

- Hierarchical process definition
- Drag-and-drop model development
- Graphic import and export
- Template-based process documentation
- Model-driven requirements definition
- Process FitGap Analysis and Blue Printing for ERP implementation
- Link activities to underlying documents and web pages

Change Management

- Interactive user involvement
- Visualization and communication of workflows and roles
- Focused examination of isolated processes
- Quantifiable business improvements

Business Activity Monitoring (BAM) & Business Process Management (BPM)

- Executive dashboards
- Ease of integration with Business Intelligence products through Service-oriented Architecture (Cognos, Ensemble, Ultimus, OpTek, WorkPoint, IBM, ExpertFit, Model Fit, and Interfaces)

- Predictive Analytics to extend BAM capabilities
- Supports 3 levels of model maturity
 1. Standard desktop simulation
 2. Web-based decision support
 3. Real-time predictive analytics
- Server-based remote execution

Activity-Based Costing (ABC)

- Aggregate and breakdown costs
- Activity-based process and object costing
- Variable and fixed costs
- Flexible cost periods

TECHNICAL CAPABILITIES

Activity-Based Modeling

- Predefined modeling constructs
- Powerful expression language and editor that allows for extensive model customization
- Global resource scheduling
- Preemption of lower priority tasks
- Transportation delays and constraints
- Metamodel Editor supports adding user and industry defined metadata such as DoDAF, BPMN, and LSS.

Discrete-Event Simulation

- Proven simulation engine
- Object-oriented simulation
- Alternative process representations
- Template all model objects for reuse
- Template library
- Time scale ranges from nanoseconds to years
- Distributed simulations (on same machine or multiple machines via network)
- External management of simulation time across distributed simulation

Statistical Data Analysis/Optimization

- 27 built-in statistical distributions and user-defined distributions
- ExpertFit® distribution fitting software
- ModelFit™ automated distribution fitting
- Experiment Manager
- OptQuest® automated optimization for SIMPROCESS®

Animation

- Animation playback
- Concurrent object animation
- Customizable real time plots
- Remote plot server capability

Interfaces

- Java-based architecture
- Web-services support via SOAP calls
- Workflow tools (Unified Modeling Language (UML) and Rational Rose)
- Publish models and results to web pages (HTML)
- Integrated IBM Rational Rose® connectivity with HTML published models, as well as being accessible from the SIMPROCESS menu bar.
- Remote application interface
- Optional XML format for extensibility
- Dispatcher Service supports SOA and Simulation on Demand
- Export to Ultimus BPM Suite, Workpoint and ACI Worldwide's BPM suite
- XPDL generation
- Export to Open Source DOT graphs for expanded single level layouts

Connectivity

- Read and write data in any SQL RDBMS that is JDBC/ODBC-compliant (including MS Access, SQL Server, MySQL, Excel workbooks and XML Spreadsheets)
- Pre-defined queries, graphs, and reports
- Export to UML using an XMI Interface

System Requirements

- Windows 2000, XP, Vista and Windows Server 2003 Min 512MB, Recommended 1024MB RAM
- Linux (Red Hat or derivative) and UNIX® Capability
- Intel x86 or compatible processors only.

How can SIMPROCESS® Help Your Business?



- **Support ERP Blue Printing.**

SIMPROCESS® is perfectly suited to support your business systems transformation projects involving commercial ERP packages. With rapid process flow modeling and simulation, the “To Be” processes inherent in the ERP solution can be modeled, analyzed, and visualized to best determine process changes from a business operations and performance perspective. This provides you the ability to make better and lower risk ERP configuration and implementation decisions.

- **Support business process change management.**

SIMPROCESS® provides excellent visualization, animation, and metrics-based feedback on business process reengineering projects to better communicate process changes. This lowers change management risk by providing you insight on how the processes will change and also on the quantitative basis for the process change benefits.

- **Create a decision support system.**

Use SIMPROCESS® features, including Dispatcher services, and build a web-based application wrapped around the SIMPROCESS® models to create a robust decision support system. The performance models can be built to address managing resource requirements, resource projections and/or associated budget projections. The models are also useful in conducting “what-if” studies to support trade-off analyses.

- **Provide predictive analytics to BI and Decision Support solutions.**

SIMPROCESS® provides the capability to model and correlate key business metrics with the operational processes. This is a critical step in defining the key process indicators and metrics that will ultimately need to be implemented in BI, Dashboarding, and Decision Support solutions. SIMPROCESS® can prototype the metrics and dashboards at your business level prior to designing the BI or Dashboard solutions. The SIMPROCESS® model can be reused as a callable web-service to provide predictive analytics. It can be invoked from a BI dashboard or triggered from other business events.

- **Reengineer old legacy systems to fit the current business needs.**

Upgrading existing systems can be risky, especially when technology evolves at remarkable speeds. SIMPROCESS® helps determine what technology is best suited for your business. SIMPROCESS®, in conjunction with the IBM Rational Rose® and CACI's RENovateSM methodology, defines the business requirements that will form the baseline for any future system redesign.

- **Optimize your process flows.**

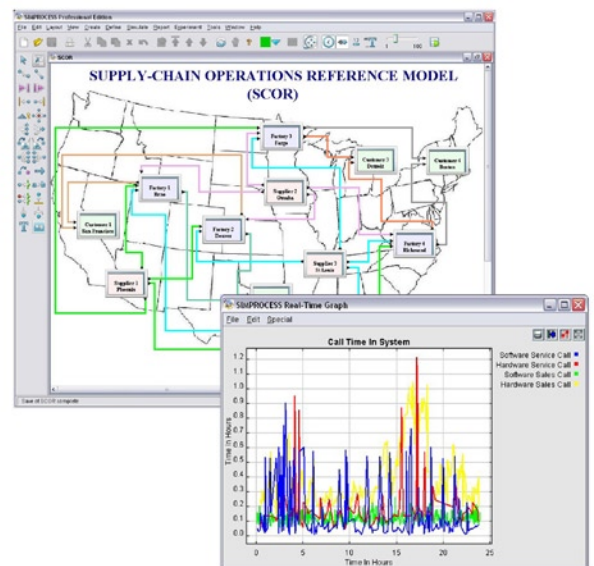
SIMPROCESS® can help you achieve your goals; whether to save money, or to increase production. SIMPROCESS® allows you to graphically represent your business processes and then optimize on key system metrics with OptQuest®. SIMPROCESS® now comes with ExpertFit®, and ModelFit™ software to increase the data analysis capabilities.

Creating a Paperless Municipal Court

The Beaverton, OR municipal court was experiencing growing pains associated with its business practices and the introduction of photo radar. It was estimated that photo radar citations were going to increase the court's workload by an additional 14,000 to 21,000 citations a year. To ensure there was adequate court staff, Beaverton engaged CACI to develop an implementation plan using simulation to significantly improve the court's operations. CACI designed a paperless municipal court to meet the project objectives; SIMPROCESS® was used to plan a phased migration. The streamlined search and retrieval process would save up to 12 minutes per query. **The resultant savings were estimated at \$33,000 – \$100,000 for initial quick improvements and \$100,000 – \$250,000 per year upon full implementation.**

Underwriting Administration Business Processes

An International Life Insurance Company used CACI's BPR methodology and SIMPROCESS® to improve their underwriting process including their application cycle-time. The process required several weeks to approve a new application, resulting in several weeks of delayed revenue. **The “To-Be” model identified a reduction of almost ten days in the application processing time and allowed for almost a 60% increase in the number of applications processed annually.**



Visit us and download a FREE trial from the web:
www.simprocess.com



SIMPROCESS®

SIMPROCESS is a registered trademark of CACI. ©CACI 2009
All other trademarks and service marks are the property of their respective owners.
F028_C11_0903

CACI
EVER VIGILANT

14151 Park Meadow Drive • Chantilly, Virginia 20151
877.663.3746 (toll free) • Fax: 703.679.3354 • E-mail: simprocess@caci.com